



wattyl

Wattyl has grown from humble beginnings in 1915 through two world wars, the Great Depression and the boom of the Fifties right through into the new century. Wattyl produces a broad range of paints, varnishes, lacquers and special purpose protective coatings. The products are used in the domestic, commercial and industrial markets. Wattyl is proud of its portfolio of leading brands, covering all segments of the paint and coatings market. Throughout the past century, Wattyl has built on past innovations producing numerous technologically advanced, market leading products to suit market demand and continually research and develop products for the future. Wattyl Killrust is superior metal protection system designed to rejuvenate, beautify and protect your metal surfaces in three easy steps – prepare, prime and topcoat.

[www.wattyl.com.au](http://www.wattyl.com.au)



The tough marker for tough jobs, Sakura offers the Solid Marker as solidified paint in a marker stick. It marks through oil, grease, rust, mud, snow - inside or outside. Dries within minutes, and is permanent once dry. Solid Markers won't fade or wash off like chalk. The special "stay fresh" twist mechanism keeps paint fresh and ready to use. Ideal for use on wood, cloth & canvas, plastic, steel & iron, rubber, cardboard, glass, fiberglass & concrete. Solid marker features a tough, broad stroke, is quick-drying and virtually odorless. This marker is widely used in commercial and industrial applications in construction, welding & fabrication, pipelines & drilling, assembly lines, automotive tires & windshields, HVAC, plumbing systems or with stencils.

[www.craypas.com](http://www.craypas.com)

MODFIX

MODFIX manufactures one of the largest ranges of plastic concrete accessories, bar chairs and spacers, as well as components for formwork and precast. Working closely with both customers and end users, Modfix has continued to assist in the development of new, cost effective solutions for the building and construction industries. Success, growth and the vigorous pursuit of product development by the Modfix team has led Modfix to be one of the leaders of the industry.

[www.modfix.com.au](http://www.modfix.com.au)



Wattyl

Rust Preventive Coating . . . . . page 127

Sakura

Solid Maker . . . . . page 128

Ramset

Non-shrink Cement Grout . . . . . page 129

Modfix

Shimplate . . . . . page 130

## KILLRUST Cold Galvit® Export

Wattyl Killrust Cold Galvit® Export is a heavy duty zinc rich epoxy primer, which provides long term protection to steel, wrought iron, and other ferrous metal surfaces.



### Specifications

Colour	Grey
Surface Dry	Thirty (30) minutes
Recoat	Twenty four (24) hours
All figures are quoted at 25°C and 50% relative humidity. Drying will take longer at lower temperatures or higher relative humidity	
Coverage per coat	up to 9 M <sup>2</sup> /L (depending on the texture, surface porosity and method of application)
Wet Film Thickness	110 microns
Dry Film Thickness	42 microns when applied at 9 M <sup>2</sup> /L
Thinning	Product is supplied ready for use, however may be thinned with up to 10% Wattyl Thinner L703
Clean up	Thoroughly clean equipment with Wattyl Thinner L703
Zinc Content	Greater than 85%
VOC content	< 250g/L
Packing	available in 250ml, 500ml, 1L, 4L containers

### Principal Characteristics

- Suitable for interior or exterior use.
- The zinc rich coating repairs damaged surfaces, provides ongoing rust protection through its sacrificial reaction if exposure occurs.
- Convenience of a single pack product makes Killrust Cold Galvit® Export a versatile and practical primer.
- High adhesion primer characterised by easy application and quick drying.

### Recommended Substrate Conditions and Temperature

- Recommended as a long term, heavy-duty cold galvanising primer for atmospheric corrosion protection of structural steelwork, such as exteriors of tanks, building plants, machinery steel handrails and balustrades.
- Wire brush or mechanically sand all loose, flaking material or rust to a smooth clean surface. Remove grease, oil or dust by wiping down with mineral turps and allow to dry.
- Application should not be carried out if the air temperature or the substrate temperature is below 10°C or above 35°C. The temperature must not fall below 10°C during the drying process.
- Surface must be clean and bare for cold galvanising to work.

### Instructions for Use

- Stir contents thoroughly with a flat stirrer before and during use.
  - Apply one (1) full coat to a correctly prepared surface by brush, roller or spray equipment. Seal with one (1) coat Killrust Heavy Duty Primer® (D2.11), finish with Killrust Epoxy Gloss Enamel® (D4.59).
- Note : If work has stopped for more than 15 minutes, application equipment must be cleaned to remove dry paint before resuming.
- \* Please refer to MSDS for safety data

### Volatile Organic Compounds (VOC)

#### VOC content < 250g/L

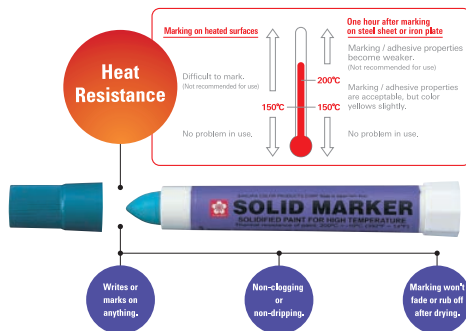
Type of Regulated Architectural Paint under the Air Pollution Control (Volatile Organic Compounds) Regulation of Hong Kong: [Zinc-rich Industrial Maintenance Primers] or [Rust Preventative Coatings]  
VOC content (ready to use) not exceeding 250 g/litre

香港空氣污染管制(揮發性有機化合物)規例下受規管建築漆料的類別:

[富鋅工業保養底漆] 或 [防銹塗料]

揮發性有機化合物含量(即用狀態)不超過250克/公升

## Solid Marker



### Comparison of Sakura Solid Marker With Conventional Marker

	Sakura Solid Marker	Conventional marker
Does it mark on anything?	Yes	No, only on non-absorbent surfaces.
Should it be stirred before use?	No	Yes
Does the paint / ink clog or drip?	No	Yes, sometimes.
Use of entire tube of paint / ink	Excellent	Fair
Writing stability (Rapid, uniform deposition of paint / ink)	Excellent	Poor
Upside-down marking performance	Excellent	Poor
Safety in use overhead	Excellent	Good
Wet surface writing performance		
On plastic (PVC)	Excellent	Poor
On iron	Excellent	Poor
On styrene foam	Excellent	Poor
Hot surface (150°C) writing performance	Excellent	Poor

### Product Description

Item code:	XSC
Product name:	SAKURA Solid Marker
Colors available:	8 regular colors: Yellow, Orange, Red, Purple, Green, Blue, White and Black
Size:	Length: 130 mm; Diameter: 13 mm; Net weight: 13 g; Marking length: 1,000 m (Depends on conditions)
Ink:	Pigmented opaque paint
Contents:	Pigment, resin, solvent (alcohol) and additives
Heavy metals	N.D.
Packaging	Inner carton: 12 pcs; Outer carton: 432 pcs.

### Product Features

- Writes immediately after cap is removed.
- There is no slipping, squealing or squeaking. You can use the entire tube of paint for extra economy.
- Dries permanently within 5-7 minutes after marking.
- Marker won't dry even if left uncapped for 30-60 minutes.
- Mismarks can be removed with alcohol.
- Fade proof (except fluorescent colors) and waterproof.
- No brushes or solvents necessary. Marking can be done with one hand at any angle. Nonflammable and completely safe.
- Writes even upside down.
- Will not smear or permeate paper.
- Available in white and 7 regular colors plus 3 fluorescent colors to meet all kinds of marking needs.

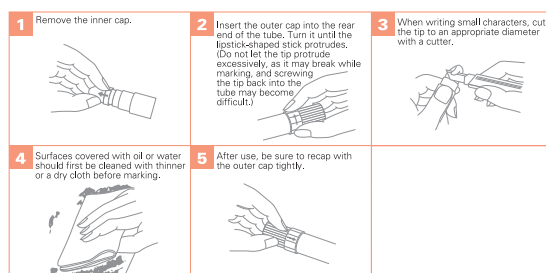
### Applications

- Checking and marking on iron, steel, wood, vinyl, glass, rubber, leather and paper.
- Checking and marking on architectural and industrial materials.
- Marking holes to be drilled for bolts.
- Marking on tires and wheels, etc.
- Marking and writing names on outdoor furnishings.
- Retouching scrapes and worn portions or where paint has flaked off. (Cars, galvanized sheet iron, housing materials, sashes, board gates, fences, etc.)

### Usage notes

- After use, discard the inner cap and recap the marker with the outer cap.
- To correct letters or marking on smooth surfaces such as glass, steel and plastic, remove with sterilizing alcohol. To correct letters or marking on uneven surfaces such as paper, cloth and wood, remove by scraping, sanding, or similar.
- Do not let the tip protrude excessively, because it may break while marking, and screwing the tip back into the tube may become difficult.

### How to use



## Premier Grout MP™ Class A Non-Shrink Cement Grout

Premier Grout MP™ is a Class A, non shrink cement grout that complies with AS MP20, Part 3 (1977).



### Substrates

- Concrete

### Approvals

- AS MP20, Part 3 (1977)

### Strength

Age	Compressive Strength	Flexural Strength
1 day	25N/mm <sup>2</sup>	2N/mm <sup>2</sup>
3 days	45N/mm <sup>2</sup>	-
28 days	60N/mm <sup>2</sup>	10.8N/mm <sup>2</sup>

Initial set	5hrs to 6 hrs depending on temp.
Final set	7hrs to 8 hrs depending on temp.
Traffic time	Vehicle 48hrs pedestrian 24hrs
Application thickness	Max 100mm Min 20mm

### Overview

Premier Grout MP™ is a Class A, non shrink cement grout that complies with AS MP20, Part 3 (1977). The product consists of a speciality blend of cement, graded aggregate and other chemically reactive agents that compensate for drying shrinkage commonly found in cement products. Premier Grout MP™ does not contain any ferrous material or Calcium Chloride. High strength Premier Grout MP™ will not shrink making it ideal for filling holes and voids in concrete for installing and repairing posts, bolts, pipe penetrations or structural underpinning.

Coverage : 11 litres per 20 kg bag, 91 bags per 1m<sup>3</sup>

Cure time : Full cure 28 days at 20°C

### Product Advantages

- High Strength
- Non-shrink
  - Good dimensional stability
  - Complete void filling
- Versatile - Can be dry packed, rammed, trowelled, poured and pumped over short distances
- Economical, low in-place cost
- Ready to use, pre mixed, requires only the addition of water.
- Non-staining – chloride and iron free
- Lower water/cement ratio
  - Reduced drying shrinkage
  - Increased hardness and durability
- Reduces Permeability

### Applications

- All general purpose grouting
- Installing Balustrade Posts
- Grouting under Precast and tilt slab panels
- Grouting ducts in post-tensioned concrete panels
- Grouting machine and bearing base plates
- Grouting:
  - Reinforcing Bars
  - Anchor Bolts
- Grouting in column bases
- Filling core holes, rod holes and defects in concrete
- Fill-in grout for hollow concrete block walls

### Product Range - Premier Grout MP™

Part No.	Volume	Appearance	Order Qty
RPGMP	20kg Bag	light grey	1

## Modfix Shimplate

High Load Strength - Colour Coded - Non-Skid Profile



### Material and Properties

Property	Test Method	Units	Value
Tensile @ Yield	ASTMD638	MPa	28
Elongation @ Break	ASTMD638	%	50
Flexural Strength	ASTMD790	MPa	42
Flexural Modulus	ASTMD790	GPa	2.4

- Typical properties; not to be construed as specifications
- Values quoted are the result of tests on representative samples and the product supplied may not conform in all respects.
- Values quoted are the result of tests on Natural/Un-pigmented product. These values may vary on products that contain pigmentation or any other additive.
- Compression tests on Modfix standard panel shims have been carried out at Monash University, Department of Material Engineering. No Yielding nor any deformation was observed.

### Product Overview

- A reinforced polypropylene blend compound, exhibiting excellent surface finish and processability characteristics.
- Designed for packing underneath concrete precast or tilt-up panel, to gain alignment with a non-skid surface.
- Colour coded by thickness for ease of selection. Modfix packing shims are manufactured from quality plastic and tested with compressive loads up to 20 tones.
- Horseshoe style with long and short slots, are also available for placement around starter bars, locating bolts and pins etc.

### Product Advantages

- Very light to carry that ease the job at height
- No contact corrosion with steel or stainless steel bracket/anchor
- Variety of size and thickness

### Applications

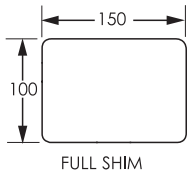
- Commercial and civil applications such as packing under panels, machines, door and window frames.
- Bottom of precast panel
- Shim between steel bracket and wall

### Size Availability

- Standard size 150 x 100 with 1, 2, 3, 5, 10, 15 and 20mm thickness.
- Horseshoe and half shims are also available

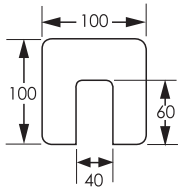
### Product Ranges - Modfix Shimplate

#### Full Shim 150mm x 100 mm



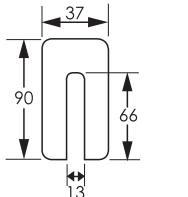
Order Code	Thickness	Colour
SHIM01	1	BROWN
SHIM02	2	BLUE
SHIM03	3	GREEN
SHIM05	5	YELLOW
SHIM10	10	BLACK
SHIM15	15	GREY
SHIM20	20	WHITE

#### Horseshoe Shim 100mm x 100 mm with slot 60mm x 40mm



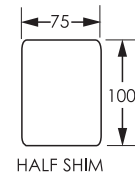
Order Code	Thickness	Colour
SHHC02-100/40	2	BLUE
SHHC03-100/40	3	GREEN
SHHC05-100/40	5	YELLOW
SHHC10-100/40	10	BLACK

#### Horseshoe Shim 90mm x 37 mm with slot 66mm x 13mm



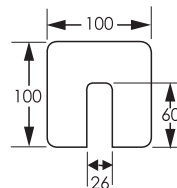
Order Code	Thickness	Colour
SHHB01.5-90	1.5	BROWN
SHHB03-90	3	GREEN
SHHB05-90	5	YELLOW
SHHB10-90	10	BLACK

#### Half Shim 100mm x 75 mm



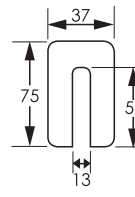
Order Code	Thickness	Colour
SHS01	1	BROWN
SHS02	2	BLUE
SHS03	3	GREEN
SHS05	5	YELLOW
SHS10	10	BLACK
SHS15	15	GREY
SHS20	20	WHITE

#### Horseshoe Shim 100mm x 100 mm with slot 60mm x 26mm



Order Code	Thickness	Colour
SHHC01-100/26	1	BROWN
SHHC02-100/26	2	BLUE
SHHC05-100/26	5	YELLOW

#### Horseshoe Shim 75mm x 37 mm with slot 52mm x 13mm



Order Code	Thickness	Colour
SHHA01.5-75	1.5	BROWN
SHHA03-75	3	GREEN
SHHA05-75	5	YELLOW
SHHA06.5-75	6.5	WHITE
SHHA10-75	10	BLACK