

# FIRESTOP AND INSULATION

Specified Technologies Inc. (STI) is an industry leader solely committed to the development of innovative, reliable firestopping solutions that help stop the spread of fire, smoke and toxic fumes. For over 25 years, the management team has worked hand in hand with the construction industry to create innovative firestop solutions for all types of new construction and retrofit applications. STI offers the broadest range of UL® Classified Systems — more than any other manufacturers. STI keep material requirements to a minimum and design systems with the installer in mind. The result is less labor and significantly lower installed costs.

[www.stifirestop.com](http://www.stifirestop.com)

 Specified Technologies Inc.  
STI THE FIRESTOP AUTHORITY

 SpecSeal  
FIRESTOP PRODUCTS

Astroflame is a manufacturer of passive fire stop products, draught and weather sealing systems for the construction industry. Product range covers Door Protection, Finger Protection, Lighting Protection, Fire Stop Products, Mastics and Foams, Acoustic Seals, Disabled Access, Anti Graffiti Paints and Fire Paints. A comprehensive range of intumescent passive fire stopping products are offered for use in walls, floors, ceilings, doors, ducts and other fire rated compartmentation structures. Fire testing has been carried out by Certifire, Warrington Fire Research, Chiltern Fire, BRE, Loss Prevention Council and NHBC Type Approval.

[www.astroflame.com](http://www.astroflame.com)

 ASTROflame®  
MANUFACTURERS OF PASSIVE FIRE STOP PRODUCTS

MCM Rockwool is developed by a team of experienced professionals in the insulation industry with over 15 years in manufacturing and product development. The production strictly follows ISO9001 standard to ensure the top quality products out of the line. MCM Rockwool is commonly used in the industrial and construction sectors for various thermal insulation applications. Currently MCM products are distributed to the domestic markets and some exported to China and Southeast Asia countries. MCM are dedicated to the continuous improvement and development of new and existing products to meet the ever changing market needs and demands.

[www.mcmhk.com](http://www.mcmhk.com)

 MCM

Being the trustworthy and innovative manufacturer and supplier of waterproofing, chemical-based construction materials, Leadercell products are proven to be complied with British Standard and ASTM requirement. Leadercell PE Foam Backer Rod is widely adopted in many major Hong Kong infrastructure projects like Express Railway of Hong Kong Airport and other private or commercial development.

 Leadercell®

## SpecSeal by STI

Curtain Wall Firestop Spray . . . . .	page 75
EZ-PATH® Fire Rated Pathway. . . . .	page 76
Firestop for Large Opening . . . . .	page 77
Firestop for Plastic Pipe . . . . .	page 78
Firestop for Cable / Pipe and Conduit . . . . .	page 79
Firestop Joint Sealant and Joint System. . . . .	page 81
Firestop for Electrical Box . . . . .	page 82

## AstroFlame™

Firestop Product Ranges . . . . .	page 83
-----------------------------------	---------

## MCM

Rockwool Insulation. . . . .	page 87
------------------------------	---------

## Leadercell

Backer Rod . . . . .	page 88
----------------------	---------

## Ramset

Construction Foam . . . . .	page 89
-----------------------------	---------

## Soben

Calcium Silicate and Fibre Cement Board . . . . .	page 90
---------------------------------------------------	---------

## AS Elastomeric Spray

The Professional's Choice for Spray-Applied Firestop Protection of Joints and Penetrations.



### Features & Benefits

- Original quick-dry elastomeric formula.
- Water-based - for easy installation, clean-up and disposal.
- Thixotropic - superior high-build properties.
- Safe - low VOCs, no solvents, non-halogenated.
- Auto-bonding - may be re-coated or repaired using ES Caulk.
- Low abrasion - for longer pump life and less maintenance.
- Tested with direct-applied fireproofing.
- Acoustically tested - reduces noise transmission.
- Water-resistant - will not re-emulsify when dry.

### Applications

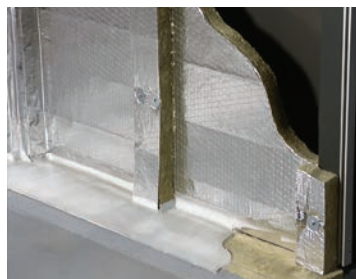
- Slab edge/Curtain wall conditions.
- Head of wall - concrete fluted deck to gypsum wall.
- Head of wall - concrete slab to masonry wall.
- Control/expansion joints (wall & floor).
- Metallic pipes.
- Steel ducts.

Part No.	Description
AS205	Elastomeric Spray (construction joints) 5 gal. Pail (1,155 Cu. In., 19.0 L)

## Fast Tack™ Firestop Spray

The Curtain Wall Firestop Spray that Won't Wash Out!

Silicone/urethane hybrid formula provides fire protection for construction joints, curtain walls, and applications in concrete floors. Fast Tack™ Firestop Spray is well suited for use around penetrants subject to vibration or movement or in areas that may be prone to washouts or exposure to water and moisture.



### Features & Benefits

- All-weather formula.
- Skins over quickly to resist water.
- Quick-dry/tack-free in 2-4 hours.
- For use in extreme weather conditions, such as cold or rain.
- Cures below freezing.
- Can be top coated, spray coated or flow applied.
- Auto-bonds for easy touch ups.

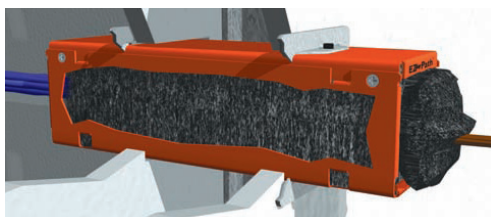
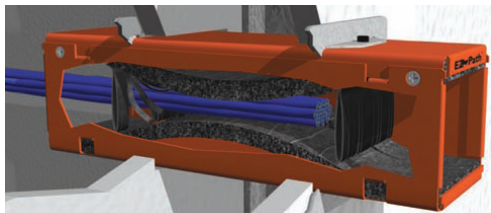
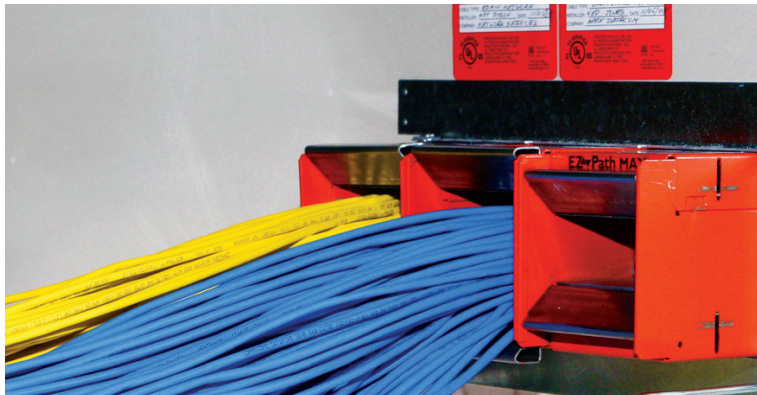
### Applications

- Slab Edge/Curtain wall conditions.
- Floor to floor joints.
- Floor to wall joints.

Part No.	Description
FT305	Fast-Tack Firestop Spray 5 gal. Pail (19.0 L)

## Firestopping Is No Longer The Problem... It's The Solution!

- Organize cables by type, use or trade.
- Install in walls or floors to provide managed portals to route cables.
- Install one or gang them up for additional capacity and better cable organization!



### Maximum Fire & Smoke Protection

- Maximum resistance to fire and smoke whether empty or 100% visually filled.
- Assures fire and smoke protection with every new or retrofit cable installation.
- Superior fire and smoke leakage vs. standard sleeve and putty systems.
- Unlike conventional sleeve and putty systems, EZ-Path® remains fire and smoke compliant 100% of the time!

### No Firestopping Required

- Built-in firestopping system automatically adjusts to the number of cables installed.
- Design assures it is firestopped at all stages of use.
- Mechanical application eliminates the use of sealant, putty and other products that need to be removed and replaced.

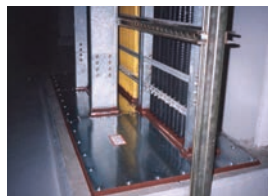
### Fast Acting Intumescence

- Engineered for rapid expansion when exposed to fire or high temperatures.
- Intumescent material responds to flames or heat by quickly sealing the pathway and preventing the passage of flames and smoke.
- Innovative built-in firestop design assures it is firestopped and smoke-sealed — even at maximum cable loading.

For easy-to-use installation guide on the complete EZ-PATH® Fire Rated Pathway product line, please consult our engineer for details.

## Composite Sheet

Lightweight, easily fabricated panels surface mount to walls and floors to provide a neat, clean firestop seal for medium to large openings with a variety of penetrants in fire-rated floors and walls.



### Features & Benefits

- Lighter and thinner - approximately 1/2 the weight and thickness of traditional composite sheet.
- Easier to fabricate - engineered with the installer in mind.
- Can be cut and installed with common sheet metal tools.
- Intumescent - expands up to 15 times when exposed to temperatures in excess of 350°F (177°C) compared to 8-10 times for competing brands. Forms a dense insulative char that minimizes heat transfer.
- Hole reduction - reduces large openings when used in conjunction with other SpecSeal® or EZ-Path® Firestop Products.
- Acoustically tested - reduces sound transmission.

### Applications

- Medium to large openings through common constructions.
- Single or multiple cable trays for power, voice, data.
- Bus ducts.
- Multiple metallic conduits & tubing. Multiple mixed penetrants of many types.
- Blank openings (penetrants removed).
- Suitable for clean room/area environment.
- Combine with the EZ-PATH® System for cable penetrations through large openings.
- Plastic pipes.
- Insulated metallic pipes.
- Metal pipes.

Part No.	Description
CS1628	16 x 28 in. (41 x 71 cm) Composite Sheet
CS2436	24 x 36 in. (61 x 92 cm) Composite Sheet
CS3636	36 x 36 in. (92 x 92 cm) Composite Sheet
CS3641	36 x 41 in. (92 x 104 cm) Composite Sheet
CS2852	28 x 52 in. (71 x 132 cm) Composite Sheet

## SSB Intumescent Firestop Pillows

Compressible cushions can be easily installed and removed. The perfect firestop solution for medium to large openings including cable bundles, cable trays, bus ducts and multiple conduits.



### Features & Benefits

- Intumescent - expands in all directions for a tough, tight seal.
- Re-installable for easy retrofitting of cables.
- Single side application makes installation easy for tough access openings.
- Heat-sealed poly cover protects core and makes pillows slide in and out with ease.
- Superior air leakage ratings!
- Broad base of tested systems.

### Applications

- Medium to large openings through common constructions.
- Loose cable for power, voice, data.
- Single or multiple cable trays for power, voice, data.
- Bus ducts.
- Multiple metallic conduits & tubing.
- Multiple, mixed penetrants of all types.

Part No.	Description
SSB14	Firestop Pillow 1"x 4"x 9" (2.5 x 10 x 23 cm)
SSB24	Firestop Pillow 2"x 4"x 9" (5.0 x 10 x 23 cm)
SSB26	Firestop Pillow 2"x 6"x 9" (5.0 x 15 x 23 cm)
SSB36	Firestop Pillow 3"x 6"x 9" (7.6 x 15 x 23 cm)



Check out STI Product Guide for SSM Firestop Mortar

## Intumescent Firestop Collars

### The Right Combination of Price & Performance.

The economical solution for firestopping common plastic pipe that doesn't compromise safety or performance.



### Features & Benefits

- Easy installation - uses STI's quick closure design.
- Compact profile - use it in all the tight spots!
- Water-resistant - no water soluble or hygroscopic ingredients.
- Fast-acting expansion (up to 60x) - to seal off burning pipes.
- Safe for contact with plastics.

### Applications

- Combustible penetrants (factory manufactured).
- Protects a variety of plastic pipes - PVC, PVC Foam Core (ccPVC), CPVC, ABS, and ABS Foam Core (ccABS).
- Vented (DWV) and closed (electrical conduit and water supply) installations.

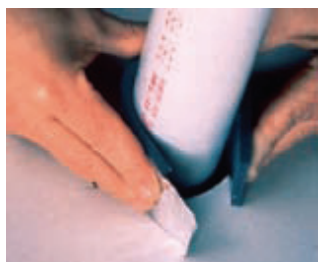
Part No.	Description
LCC150	For 1.5" (3.8 cm) Dia. Plastic Pipe
LCC200	For 2.0" (5.1 cm) Dia. Plastic Pipe
LCC300	For 3.0" (7.6 cm) Dia. Plastic Pipe
LCC400	For 4.0" (10.2 cm) Dia. Plastic Pipe
SSC600	For 6.0" (15.2 cm) Dia. Plastic Pipe



Check out STI Product Guide for RTC Intumescent Firestop Collars

## SSW Intumescent Wrap Strips

When you need a great solution for firestopping insulated and combustible pipe penetrations choose RED2 Wrap Strip. If your project takes you beyond stock PVC and ABS piping and into the tougher-to-protect plastics like PP, FRPP and PVDF, you need the unmatched power and protection of BLU and BLU2 Wrap Strips!



### Features & Benefits

- The industry's broadest range of UL® classified systems including the largest tested plastic pipes!
- Easy installation - soft and flexible, less strip and less fasteners needed.
- Rapid expansion - closes off burning penetrants faster.
- High volume char - significant expansion seals off opening!
- Water-resistant - no soluble or hygroscopic ingredients.
- Economical - 12' roll means no piecing...less waste!
- Highly flexible - no foil...soft...supple...easier to install!
- Versatile performer - for a wide range of complex applications.

### Applications

- Firestopping combustible penetrants such as nonmetallic pipes or pipe insulation.
- All common forms of construction - concrete floors, concrete over steel deck, concrete walls, concrete block walls, gypsum board/stud walls, and wood floor/ceiling assemblies.
- Can be used with restraining collars or as a tuck-in.

Part No.	Description
SSWBLU	Blue Wrap Strip (2"Wx3/16"Tx12'L)
SSWBLU2	Blue Wrap Strip (2"Wx1/8"Tx12'L)
SSWRED	Red Wrap Strip (1.5" W x 1/4" T x 12'L)
SSWRED2	Red Wrap Strip (1.5"Wx1/8"Tx12'L)
SSWRC	Metal Restraining Collar 25' (For use with SSWBLU)
SSWRC2	Metal Restraining Collar 25' (For use with SSWRED)
WSC-8	Preformed Restraining Collar for 6" & 8" Plastic Pipe for use with BLU/BLU2
WSC-8RED	Preformed Restraining Collar for 6" Plastic Pipe for use with RED/RED2
WSC-12	Preformed Restraining Collar for 10" & 12" Plastic Pipe for use with BLU/BLU2

## TRIPLE S® Intumescent Sealant

Premium, multi-viscosity grade sealant for commercial and industrial applications. The original and still the best multi-purpose sealant.



### Features & Benefits

- Patented two-stage intumescent technology - extremely fast and directionalized expansion.
- Water-based - easy installation, cleanup and disposal.
- Excellent smoke seal.
- Low shrinkage.
- Acoustically tested - reduces noise transmission.
- Sandable and paintable (when dry).
- Water-resistant - will not re-emulsify when dry!
- Safe - low VOCs, no solvents, non-halogenated.
- Red color - easy identification and inspection.

### Applications

- Metallic pipes including steel, iron, or copper pipe and tubing.
- Nonmetallic pipes, conduits and tubing including PVC, CPVC, PVDF, PEX, PEX-AL-PEX, ABS and PB.
- Cable, cable trays and bus duct.
- HVAC ductwork.
- Insulated pipes.
- Multi-service penetrations including AC line sets, electrical, telephone, or TV service entrance and interior penetrations.
- Complete wood floor firestopping package for electrical, plumbing, HVAC, TV and telephone.

Part No.	Description
SSS100	Intumescent Sealant 10.1 oz. Tube (18.2 Cu. In., 300 ml)
SSS105	Intumescent Sealant 5 gal. Pail (1155 Cu. In., 19.0 L)
SSS120	Intumescent Sealant 20 oz. Sausage (36 Cu. In., 592 ml)

## LCI Intumescent Sealant

A Great Combination of Price and Performance in a Firestop Sealant SpecSeal® Series LCI is a standard grade intumescent sealant specifically engineered and tested to economically address many common firestop applications that represent a significant part of the overall market.



### Features & Benefits

- Commercial grade sealant.
- Fast-acting intumescence - expands up to 10X.
- Water-based - easy installation, cleanup, and disposal.
- Excellent smoke seal.
- Water-resistant - will not re-emulsify when dry.
- Acoustically tested - reduces noise transmission.
- Safe - low VOCs, no solvents, non-halogenated.

### Applications

- Metallic pipes including steel, iron, or copper pipe and tubing.
- Nonmetallic pipes, conduits and tubing including PVC, CPVC, ABS, and PEX.
- Electrical and electronic cabling including service entrance, power distribution, computer, telephone, and television.
- Metal duct work including HVAC, bath and dryer vents.
- Insulated pipes including heating, cooling, and condensation applications.
- Complete wood floor firestopping package for electrical, plumbing, HVAC, telephone, and television.

Part No.	Description
LCI300	Intumescent Sealant 10.1 oz. Tube (18.2 Cu. In., 300 ml)
LCI305	Intumescent Sealant 5 gal. Pail (1,155 Cu. In., 19.0 L)
LCI320	Intumescent Sealant 20 oz. Sausage (36 Cu. In., 592 ml)

SSP Intumescent Firestop Putty

Non-hardening, intumescent putty is easily installed and removed making it the perfect choice for cable penetrations requiring occasional retrofitting.



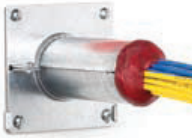
Features & Benefits

- Non-hardening for easy installation and retrofitting of cables.
- Two-stage intumescence provides aggressive expansion.
- Highly adhesive: stays put!
- Unaffected by humidity, condensation, water.
- Soft, pliable, easy to install.
- Tested and proven acoustical properties.
- No tools required.
- UL Classified (up to 3 hr.)
- FM Approved.

Applications

- Small to medium openings through common constructions.
- Single or multiple cables for power, voice, data.
- Single or multiple cable trays for power, voice, data.
- Sleeved openings for cable bundles
- Conduits.

Part No.	Description
SSP100	Putty 36 Cu. In. Tube (.6 L)
SSP28	Putty 24 Cu. In. Tube (.39 L)



Check out STI Product Guide for READY SLEEVE and READY SPLIT SLEEVE

Cable Spray

Water-based, spray-applied coating used to provide short term circuit integrity and improved flame spread characteristics for grouped electrical cables.



Features & Benefits

- Easy and economical to use.
- Water-based - easy cleanup, installation and disposal.
- Low friction formula - Less pump wear.
- Brushable for touch ups and spot repairs.

Applications

- Encapsulate grouped cables.
- Apply as fire breaks in cable tray runs.

Part No.	Description
CS105	Cable Spray 5 gal. Pail (1,155 Cu.In., 19.0 L)

## ES Elastomeric Sealant

Flexible Firestop Protection for Fire Rated Joints.



### Features & Benefits

- Elastomeric - allows movement.
- Water-based - easy installation, clean up and disposal.
- Auto-bonding.
- Compatible with AS Spray for applications or repairs.
- Safe - low VOCs, no solvents, non-halogenated.
- Water-resistant - will not re-emulsify when dry.
- Acoustically tested - reduces noise transmission.

### Applications

- Control/expansion joints.
- Slab edge conditions.
- Head of wall - concrete fluted and slab.
- Bottom of wall-deck to gypsum wall.
- Joints and gaps in sound barriers.

Part No.	Description
ES100	Elastomeric Sealant 10.1 oz. Tube (18.2 Cu. In., 300 ml)
ES105	Elastomeric Sealant 5 gal. Pail (1,155 Cu. In., 19.0 L)
ES120	Elastomeric Sealant 20 oz. Sausage (36 Cu. In., 592 ml)

## LC Endothermic Sealant

LC Sealant is a latex-based, high solids firestop compound. When properly installed, it effectively seals penetration openings against the spread of fire, smoke and toxic gases.



### Features & Benefits

- Water-based - easy installation, cleanup and disposal.
- Endothermic fillers - absorb heat and release water.
- High solids formula - no shrinkage!
- Paintable (when dry).
- Safe - low VOCs, no solvents, non-halogenated.
- Red color - easy identification and inspection.
- Excellent caulking properties along with high build capabilities.
- Excellent smoke seal.
- Flexible!

### Applications

- Piping: non-combustible steel, iron, cast iron and copper up to 24" in diameter.
- Complex multiple penetrants
- Communication cabling systems.
- Construction joints.
- HVAC ducts.

Part No.	Description
LC150	Endothermic Sealant 10.1 oz Tube (18.2 Cu. In., 300 ml)
LC155	Endothermic Sealant 5 gal. Pail (1,155 Cu. In., 19.0 L)
LC120	Endothermic Sealant 20 oz. Sausage (36 Cu. In., 592 ml)

## SpeedFlex™ Joint System

The Speedflex Joint System combines a unique backer product with SpecSeal® spray-applied coatings. This system installs over joints rather than within them to allow maximum joint movement ( $\pm 100\%$ ). Excellent repair system for cracked or improperly sealed joints.



### Features & Benefits

- Seismic testing.
- Replaces mineral wool in construction joints.
- Tested to ASTM E 1966 and ANSI/UL 2079.
- Clean, professional appearance.
- Can be used to repair cracked joints.
- Use with other SpecSeal® Firestop Products.

### Applications

- Head of wall construction joints.
- Fluted deck.
- Flat slab.
- Repair/retrofit of cracked joints.

Part No.	Description
SFJP40	Fire Rated Joint Profile Forming Material

PowerShield™ Electrical Box Inserts

When used within metallic switch and receptacle boxes, inserts are UL Tested and Classified to permit larger boxes and reduced spacing.



Part No.	Description
EP44	Electrical Box Insert 3-3/4" x 3-3/4" x 1/8" pad
EP45	Electrical Box Insert 4-1/4" x 4-1/4" x 1/8" pad

Features & Benefits

- Easy installation! Just peel and stick to inside of box.
- Can be installed before or after wall is closed.
- Non-conductive liner face.
- Easy retrofit installation.
- Low profile for minimum impact on box volume.
- Tested and proven acoustical properties.
- One step installation saves time and labor.

Applications

- Single & multi-gang metallic boxes up to 14" (356 mm) long.
- A variety of non-metallic boxes.
- Plastic & steel faceplates.
- 1 & 2 hr. wood or steel stud walls.

SSP Intumescent Putty Pads

Externally applied to switch and receptacle boxes, pads are UL tested and Classified to permit larger boxes and reduced spacing in gypsum board walls.



Part No.	Description
SSP4S	Putty Pad 7.25" x 7.25" x 3/16"
SSP9S	Putty Pad 9.00" x 9.00" x 3/16"

Features & Benefits

- Fits common 4S box with no cutting or trimming.
- Two-Stage intumescence provides aggressive expansion.
- Highly adhesive: stays put.
- Unaffected by humidity, condensation, water.
- Soft, pliable, easy to install.
- Tested and proven acoustical properties.
- Poly liner allows hands-off, clean installation.

Applications

- Single & multi-gang metallic boxes up to 14" (356 mm) long.
- A variety of non-metallic boxes.
- Plastic & steel faceplates.
- 1 & 2 hr. wood or steel stud walls.



Remember to check out our accessories for firestop applications.

## Intumescent Acoustic Mastic

### ASTRO INTU MASTIC



Part No.	Description	Size
AFIMW	ASTRO INTU MASTIC-WHITE	310ml

#### Product Features

Tested to BS476: Part 20 & EN 1366-4. Up to 4 hours fire resistance. Easy to use. Long shelf life. Acoustic insulation. For internal/external use. NHBC Type Approval. Certifire Approval.

A one part fire rated intumescent acrylic mastic designed for sealing gaps around fire doors, window frames and for sealing joints, voids and irregular holes in first structures, and for maintaining their integrity when sealing around pipes and cables that penetrate them.

The mastic has been independently tested in accordance with BS476: Part 20 and 22: 1987 and EN1366-4 and can provide up to 4 hours fire resistance depending on depth/width and volumetric area. Can be used on most construction substances, although we do recommend that a small area is tested on unusual substrates. It can be used in most low movement joints up to 25mm wide with no slump and can be overpainted. Further details and installation instructions available on request. Acoustic tests to BSEN ISO 140-3.

#### Testing Certification

- BS476 Part 20
- EN 1366-4
- BSEN ISO 140-3

## Fire Rated Acoustic Economy Foam

### ASTRO FR-EC FOAM



Part No.	Description	Size
AFFRECFORM	ASTRO FR-EC FOAM	750ml

#### Product Features

Tested to BS476 Part 20, DIN 4102 Part 1 and Class B1 Up to Two Hour Fire rating with integrity and Insulation. NHBC Type Approval. EN1366-4. Fire Rated Foam has been tested to BS476 Part 20 and Class B1 and DIN 4102. Main Uses for joints/gaps in compartment walls and floors, fire and acoustic sealing around lightweight partitioning, fire rated doors and service penetrations where the integrity and insulation of firewall needs to be maintained.

Prevents the transmission of smoke, seals ground pipework, insulates against noise and excess temperatures. Paintable.

#### Testing Certification

- BS476 Part 20
- EN 1366-4

## Intumescent Expansion Joint

### ASTRO EJ SEAL



Part No.	Description	Size
AFEJ XX/YYY	ASTRO EJ SEAL	1m

XX=joint width in mm    YYY=F-rating in minutes  
eg. 50mm joint for 2hr F-rating, Part No is AFEJ50/120

#### Product Features

Tested to BS476: Part 20 and pr EN 1366-4. Up to 4 hours fire resistance. Weather proof and water resistant. Suits internal /external applications. Performance temperature between -30 to +130°C. Certifire Approval.

The Astroflame Intumescent Expansion Joint Seal is manufactured using various thickness of flame retardant open cellular foam. Expandable graphite based intumescent is factory sprayed onto both sides of the foam, forming a compressible fire resistant joint filler which is resistant to moisture attack.

The graphite based material starts to intumesce around 180°C on the fire side of the joint whilst the fire rated foam gradually compresses allowing the expanding mass of intumescent graphite to totally seal the opening. This carbonaceous char formed by the graphite will prevent the spread of fire through the joint thus ensuring the integrity of the compartment wall/floor is maintained.

#### Areas of Use

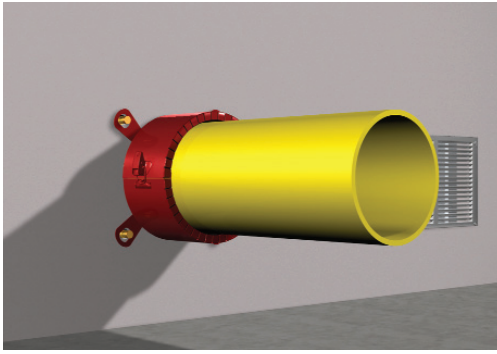
Between steelwork and blockwork where deflection and movement could occur in movement joints with blockwork walls and floors. Top of wallhead to the underside of the floor - although gaps could be uneven Astroflame Intumescent Expansion Joint Seal is extremely compressible and should accommodate any irregularities. Expansion Joint is an extremely versatile filler material.

#### Testing Certification

- BS476 Part 20
- pr EN 1366-4

## Intumescent Pipe Collar

### ASTRO COLLAR



Part No.	Description	Integrity Rating
AFPC XX/2E	ASTRO COLLAR-ECONOMY	2 hour
AFPC XX/4P	ASTRO COLLAR-PREMIUM	4 hour

XX: max. outer diameter of pipe in mm

#### Product Features

Tested to BS476: Part 20 and EN 1366-3. For use on UPVC, CPVC, ABS, MDPE, HDPE and PP pipes. Up to 4 hours fire resistance. Surface mounted, cast or semi cast applications. NHBC Type Approval.

Our pipe collars are manufactured from a high performance material inside of a steel sleeve, which on exposure to heat from a fire will rapidly expand inwards to squeeze the collapsing plastic pipe until the aperture is completely sealed. Pipe collars are tested in accordance with the performance requirements of BS476: Part 20: 1987 and EN 1366-3, Astro E Collar can provide 2 hour fire resistance for UPVC pipes or the Astro P Collar offers up to 4 hour resistance for UPVC, ABS, MDPE, HDPE plus PP.

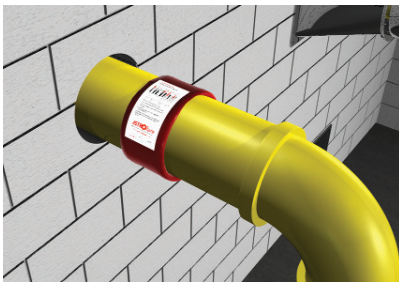
Our pipe collars are light and compact, easy to install, maintenance free and find uses in multi-storey office buildings, flat level developments, hospitals and hotels, and anywhere plastic soil and waste pipes pass through fire compartment walls and floors. Astroflame Pipe Collars are available in custom sizes from 32mm to 355mm.

#### Testing Certification

- BS476 Part 20
- EN 1366-3.

## Intumescent Pipe Wraps

### ASTRO WRAP



Part No.	Description	Integrity Rating
AFIPW XX/2	ASTRO WRAP	2 hour
AFIPW XX/4	ASTRO WRAP	4 hour

XX: max. outer diameter of pipe in mm

#### Product Features

Tested to BS476: Part 20 and EN 1366-3. To 2 or 4 hour rated. Easy to fit and are unaffected by moisture, humidity or frost, but care should be taken so as to avoid damaging the outer polythene sleeve. NHBC Type Approval. Certifire Approval.

Flexible strips of high performance intumescent material encapsulated in a polythene sleeve designed for wrapping around plastic pipes that pass through masonry floors and walls. On exposure to fire the wrap expands rapidly inwards to squeeze the collapsing plastic pipe until the aperture is completely sealed. The wraps have been independently tested in accordance with BS476: Part 20: 1987 and EN 1366-3 and can provide up to 4 hours fire resistance.

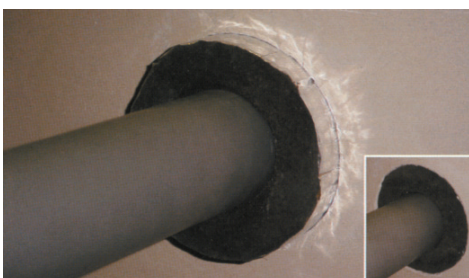
Astroflame Pipe Wraps can be custom made to suit any size of pipe between 32mm and 200mm in size.

#### Testing Certification

- BS476 Part 20
- EN 1366-3.

## Thermal Fire Pipe Sleeve

### ASTRO THERMAL FIRE PS



Part No.	Description	Length	Thickness
AFIPS XX/2E	ASTRO THERMAL FIRE PS	300mm	27mm

XX: max. outer diameter of pipe in mm

#### Product Features

Tested to BS476: Part 20&22. Excellent acoustic insulation. Suitable for a wide range of plastic, copper and mild steel pipes. Suitable for fire partitions walls and floors. Allows for thermal movement of pipe and maintains the thermal insulation of the pipe through the penetration. NHBC Type Approval. 2 hour rated.

In a fire situation the sleeve expands to fill the available space between the pipe and penetration. In the case of plastic pipes the sleeve will crush and close off the pipe forming a solid char and preventing passage of fire and smoke to the adjacent compartment.

#### Tested on the following pipe sizes.

**Copper** 12mm - 160mm  
**Mild Steel** 22mm - 160mm  
**Plastic** 55mm - 160mm

#### Testing Certification

- BS 476 Part 20 & 22

## Intumescent Cable Tray Sleeve

### ASTRO CT SLEEVE



Part No.	Description	CT Width	Sleeve Width	Length
AFCT100	ASTRO CT SLEEVE	50mm	100mm	150mm
AFCT125	ASTRO CT SLEEVE	75mm	125mm	150mm
AFCT150	ASTRO CT SLEEVE	100mm	150mm	150mm
AFCT200	ASTRO CT SLEEVE	150mm	200mm	150mm
AFCT275	ASTRO CT SLEEVE	225mm	275mm	150mm
AFCT350	ASTRO CT SLEEVE	300mm	350mm	150mm
AFCT500	ASTRO CT SLEEVE	450mm	500mm	150mm

#### Product Features

2 Hour fire rating to BS 476. Suitable for use through a wide range of fire partition walls and floors. Offers excellent acoustic insulation. Maintains the thermal insulation of the wall or floor. Cost effective: easily cut to minimize wastage, no mastic or foam is required, reducing on site time. Suitable for retro fitting. Sleeve can be easily fitted only requiring access from one side. Allows thermal movement. Simple to install without special tools or skills.

The ASTROflame range of ASTRO CT Cable Tray Sleeves are intended for use where a cable tray passes through a fire rated wall or floor. The sleeve reinstates the fire rating of the wall or floor which would otherwise be lost. In the event of a fire, the advanced ASTRO CT Cable Tray Sleeve will expand with the heat, closing off any holes or gaps to the fire for at least 2 hours. The Fire Cable Tray Sleeves are available to fit all cable tray sizes.

#### Testing Certification

- BS476 Part 22

## Intumescent Fire & Acoustic Cable Basket Sleeve

### ASTRO CB SLEEVE



Part No.	Description	Cable Basket Width (mm) x 54mm H	Sleeve Width (mm) x 108mm H	Length (mm)
AFCBS50	ASTRO CB Sleeve	50	108	180
AFCBS75	ASTRO CB Sleeve	75	133	180
AFCBS100	ASTRO CB Sleeve	100	158	180
AFCBS150	ASTRO CB Sleeve	150	208	180
AFCBS200	ASTRO CB Sleeve	200	258	180
AFCBS300	ASTRO CB Sleeve	300	358	180
AFCBS450	ASTRO CB Sleeve	450	508	180
AFCBSIF	ASTRO CB Infill Material	Thickness 20mm	Width 180mm	Length 1000mm

#### Product Features

2 Hour fire rating to BS 476. Acoustically rated. No metal sleeving required. Suitable for use through a wide range of fire partition walls and floors. Sleeve can be fitted prior to running cables. Available to fit all common cable basket sizes. Suitable for retro fitting. Allows thermal movement.

The ASTROflame range of Intumescent Fire & Acoustic ASTRO CB Cable Basket Sleeves are intended for use where a cable basket passes through a fire rated wall or floor. The sleeve reinstates the fire rating of the wall or floor which would otherwise be lost. In the event of a fire, the advanced ASTRO CB Cable Basket Sleeve will expand with the heat, closing off any holes or gaps to the fire for at least 2 hours. The Fire Cable Basket Sleeves are available to fit all cable basket sizes.

Acoustically tested in a plasterboard partition system in accordance with BS EN ISO 140-3:1995 and BS EN ISO 717-1:1997

#### Testing Certification

- BS476 Part 22

## Intumescent Fire Trunking Sleeve

### ASTRO FT SLEEVE



Part No.	Description	Width	Height	Length
AFTS50	ASTRO FT Sleeve	50mm	50mm	150mm
AFTS100	ASTRO FT Sleeve	100mm	100mm	150mm

#### Product Features

2 Hour fire rating to BS 476. Suitable for use through a wide range of fire partition walls and floors. Offers excellent acoustic insulation. Maintains the thermal insulation of the pipe through the penetration, easily cut to size to minimize wastage, no mastic is required. Can also be fitted flush to the wall offering a clean wall solution. Sleeve can be easily fitted only requiring access from one side. Sleeves tested for Metallic and polymeric pipe through plasterboard wall and solid floor and polymeric pipes through a mineral fibre batt.

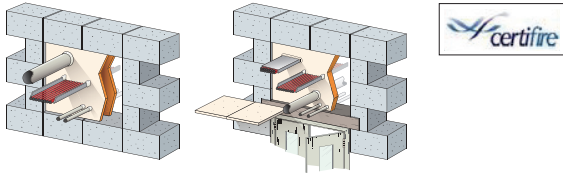
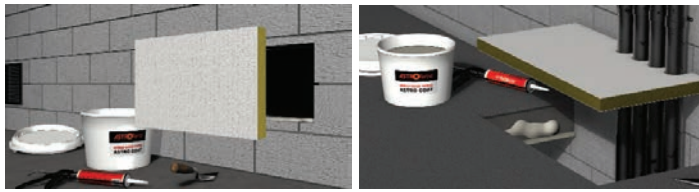
The Astroflame range of Astro FT Fire Trunking Sleeves are intended for use where plastic trunking passes through a fire rated wall. The sleeve reinstates the fire rating of the wall which would otherwise be lost. In the event of a fire, the Astro FT Trunk Sleeve expands with the heat, crushing the trunking and closing off the hole to the fire for at least 2 hours. The FT Trunk Sleeves are available to fit common sizes of plastic trunking and are suitable for retro fitting with access only required from one side. They are suitable for use with plastic trunking or can be used with cabling passed directly through the sleeve. 25mm thick wall.

#### Testing Certification

- BS476 Part 22

## Fire Batt

### ASTRO BATT



Part No.	Description	Density
AFB1200DC	ASTRO BATT (60mm)	160kg/m <sup>3</sup>
AFB1200DC50	ASTRO BATT (50mm)	140kg/m <sup>3</sup>
AFBCOAT5K	ASTRO COAT (5kg)	—

\* ASTRO COAT is used on cut edges or joints of ASTRO BATT

### Product Features

Tested to BS476 and EN 1366-3. Part 20 Up to 4 hours fire resistance. Economical Halogen free. Reduced smoke properties. Certifire Approval.

Specifically designed for sealing around service penetrations in walls and floors, a single Astroflame board (60mm thick) can provide high levels of fire integrity and insulation offering up to 4 hours resistance in accordance with BS476: Part 20: 1987. Astroflame Boards consist of a mineral fibre core coated on both sides with Astroflame Mastic, which transforms into a hard ceramic during a fire to prevent the passage of fire and smoke and the transfer of heat. Astroflame Coating, ASTROcoat, is available as a separate product.

**Astro batt Size:** 600mm x 1200mm x 60mm or 600mm x 1200mm x 50mm.  
Astro Coat should be used for coating cut edges.

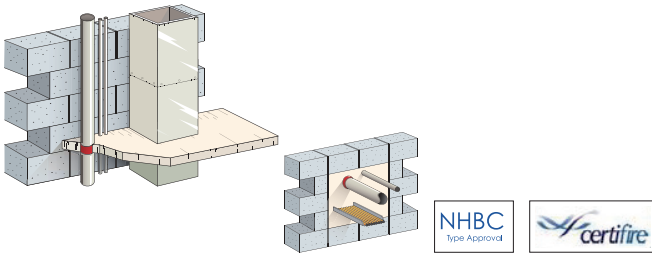
**Astrocoat Availability:** 5 kilo pails.

### Testing Certification

- BS476 Part 20
- EN 1366-3.

## Fire Resistant Mortar

### ASTRO FM COMPOUND



Part No.	Description	Size
AFFC20	ASTRO FM COMPOUND	20kg

### Product Features

Tested to BS476: Part 20. Up to 6 hours fire resistance for floors and walls. Environmentally friendly. Withstands cracking and shrinking under fire conditions. NHBC Type Approval. Certifire Approval.

A gypsum based fire resistant mortar which expands when activated by water and sets to form an excellent seal around cables, pipes and duct penetrations in walls and floors. Easily re-activated by adding extra water for up to 45 minutes after mixing.

Additional services can be easily added through the mortar and resealed with further mortar. Where plastic pipes pass through the mortar, Astroflame Pipe Wraps should be used. Astroflame Fire Resistant Mortar can provide up to 6 hours fire resistance depending on depth/width and volumetric area.

### Testing Certification

- BS476 Part 20

## Intumescent Fire & Acoustic Socket Box

### ASTRO FRA SOCKET BOX COVER

Tested to BS 476 Part 20 for up to 120 minutes. Provides an effective acoustic barrier to both impact and airborne sounds. Prevents or delays fire from entering a wall cavity and attacking the building structure.

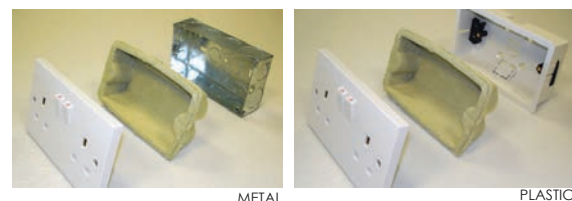


Part No.	Description	Socket	Qty.
AFFRASOCS	ASTRO FRA SOCKET BOX COVER	Single	10
AFFRASOCD	ASTRO FRA SOCKET BOX COVER	Double	10

## Intumescent Fire & Acoustic Socket Box Insert

### ASTRO FRA SOCKET BOX INSERT

Single and Double socket sizes available. Tested to BS 476 Part 20 for up to 120 minutes. Provides an effective acoustic barrier to both impact and airborne sounds. Easy to install putty pad alternative. Maintains the fire protection performance of the wall - preventing or delaying the spread of fire. Air tight reduces air leakage by 78%. Robust detail approved. Acoustically rated to Rw67dB.

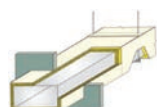
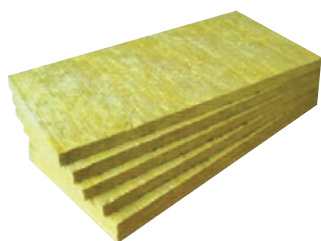


Part No.	Description	Socket	Depth	Qty.
AFFRASOCSIN	ASTRO FRA SOCKET BOX INSERT	Single	35mm	10
AFFRASOCDINX	ASTRO FRA SOCKET BOX INSERT	Double	35mm	10

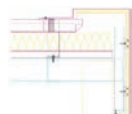
\*47mm depth available on request

### MCM Rockwool

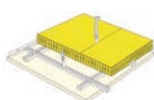
MCM Rockwool is manufactured from natural rocks such as basalt, diabase, dolomite, etc. The rocks are melted and fibered in high temperature under furnace conditions, and later shaped to the desired rockwool board. The ability to partition air makes MCM Rockwool excellent as thermal insulator and sound absorber. Thanks to the fire resistance properties, it is widely used in building and construction industry when passive fire protection is required.



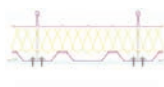
ductwork



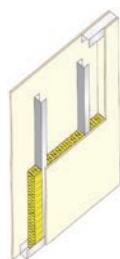
roofing & panel



suspended ceiling



aluminum roofing



partition wall

#### Physical Properties

Thermal Conductivity	$\leq 0.035 \text{ W/mK at } 70 \pm 5^\circ\text{C}$
Applicable Temperature	$-240 \text{ to } 650^\circ\text{C}$
Moistureproof	$\geq 98\%$
Fire Resistance	Non-combustible (tested to BS476 Part 4)

#### Application

Rockwool board is the most economical insulation material. It is commonly used for thermal, acoustic, fire resistance applications in domestic, commercial and civil projects.

- energy saving and conservation
- condensation prevention
- air duct and pipe works
- drywall assemblies
- passive firestop backing
- heat exchangers
- ceiling applications
- roofing and panel

#### Test Certification

- Tested to BS476 Part 4
- Tested to ASTM C423-08a and BS EN ISO 354:2003

#### Packaging

- Shrink wrapping type polythene packaging labeled with specifications
- Number of rockwool board per pack depends on ordered density and thickness, it is recommended to check the final packing upon order.

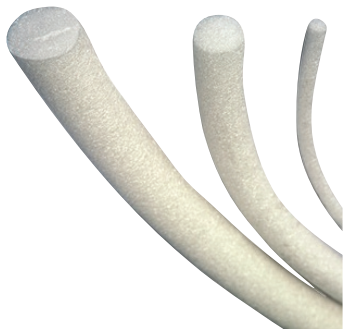
#### Standard Specifications

Nominal Density	40 - 200 (kg/m³)
Thickness	25, 30, 40, 50, 60, 70, 80, 90, 100 (mm)
Board Size	1200 x 600 (mm)
Blanket Size	3000 x 600 (mm) , 3000 x 910 (mm) 5000 x 600 (mm) , 5000 x 910 (mm)

\* Other sizes and thickness are available upon request.

Extruded closed cell polyethylene foam backer rod

Leadercell® is a flexible, readily compressible, closed-cell polyethylene back-up strip for elastomeric sealants. In a butt joint the sealant should adhere to opposite faces of the sealing slot but not to its base. Use Leadercell® as a bond breaker to prevent sealant adhering to the wrong surface (concrete to organic joint filler).



Physical Properties	
Density	30 kg/m³
Form	Cellular strip
Water Absorption	Negligible
Temperature Stability	-40 °C to 65 °C
Elongation	38 %
Packing	
Standard Size (thickness in mm)	10, 15, 20, 25, 30, 35, 40 and 50 mm
Packing*	100 m / bundle
Colour	White

\*Packing may vary in sizes

Product Advantages

- Readily compressible
- Excellent recovery
- Non-absorbent
- Non-staining
- Rot proof and CFC free
- Economical
- Easily worked
- No outgassing potential of sealant backing

Applications

- Joint filler for expansion/ movement joint
- Bond breaker for joint sealant application
- When Leadercell® is used as a back up strips, it uses to regulate the depth of the sealing slot and ensure the movement of the joint sealant is not restricted by adhesion to the base of the sealing cavity.
- The size of the back-up strip should be greater than the joint width, and depressed sufficiently to provide the required sealing slot dimensions.

Standard Compliance

- Hong Kong General Specification for Engineering Works

Storage & Precaution

- No shelf life if kept in cool and dry conditions.
- There are no health hazards associated with Leadercell® in normal use.

## Ramfoam™ Self-expanding Polyurethane Construction Foam

### Ramfoam™ Self Expanding Foam

A one-component self-expanding polyurethane foam suitable for use straight from the can. Ramfoam™ seals, fills and insulates large holes in most common building materials.



#### Typical Properties

Storage temperature :	5°C to 25°C
Service temperature :	-40°C to 100°C
Water absorption (DIN53433) :	0.3% Vol
Tensile strength (DIN53430) :	18N/cm <sup>2</sup>
Compressive strength at 10% stress (DIN53421) :	18N/cm <sup>2</sup>
Cuttable :	After 35 mins depend on relative humidity and cross size of section
Fire Rated :	BS476 Part 20

#### Fire Rating

Timber / Brick	130 mins
Timber / Block	100 mins
Block / Steel	75 mins
Brick / Steel	75 mins

#### Coverage

Unexpanded Bead (dia)	5mm	10mm	15mm	20mm
Expanded Bead (dia)	25mm	50mm	75mm	100mm
RFA750 (750ml)	120M	30M	13M	7.5M

\*Above coverage is approximate and is dependent on atmospheric conditions

### Product Range - Ramfoam™ Self Expanding Foam

Part No.	Colour	Volume	Order Qty.
RFA750	Pale Yellow	750ml Aerosol Canister	12

#### Overview

Versatile Ramfoam™ is a polyurethane polymer that reacts with moisture in the air causing it to expand to fill any shaped hole or cavity. The cured foam can then be cut or shaped and painted as desired. Ramfoam™ is great for thermal insulation, to block out drafts or to fill or repair big holes prior to painting. Painted foam is suitable for external use.

Mixing : Shake vigorously for 60 seconds prior to use

Storage : Upright position and out of direct sunlight (<30°C), 1 year shelf life

Yield : 1 can produces approximately 37 litres of cured foam

Cure time : Tack free - 15 min. at 20°C, full cure - 24 hours at 20°C

#### Product Advantages

- Expands to fill BIG holes
- Once cured, can be cut and shaped as required
- Non-shrink
- Can be sanded, filled and painted to produce a neat finish
- Excellent insulator. Blocking out dust, drafts, noise and vermin
- Ozone friendly – CFC, FC and HFC free

#### Applications

- Pipe penetrations through walls and floors
- Large gaps or holes between walls and floors
- Sealing gaps to block out dust, noise, drafts and vermin
- Gaps between joists and window and doorframes
- Filling around electrical cables
- Movie or theatre set building
- Back filling of wall cladding

#### Substrates

- Particleboard / Chipboard • Medium density Fibreboard (MDF)
- Fibre cement sheet • Timber • Hardboard • Plywood • Concrete
- Plasterboard • Galvanised steel • Brick • Mild steel • Ceramic tiles
- Acrylic • Cardboard • Stone • Aluminium • Concrete block
- Rigid PVC

## Calcium Silicate and Fibre Cement Board

Soben calcium silicate / fibre cement boards offer many benefits over conventional alternatives. They can be used to meet every requirement, whether it is in new construction or refurbishment for commercial, industrial or residential applications.

All export grade Soben Boards are 100% free from asbestos, sepiolite, inorganic fibre or formaldehyde, manufactures to ISO9001:2000 (Certificate of Conformity of Quality Management System Certification) and ISO14001:1996 (Environmental Management System Certificate) standards and have obtained the Green Product Label Award issued by National Environment Protection Bureau .



Product	Internal Wall, Industrial lining	Hoarding, Spandrel, Smoke Barrier	Improvement of Masonry or R.C. Wall	Curved Construction	Suspended Ceiling	Ventilation Duct, Building Services Enclosure	Wet Areas Applications	Flooring	External Cladding Applications
<b>FP®-900/ FirePro®</b>	A specialized fire rated calcium silicate board for all kinds of fireproofing building construction purpose up to 4 hours FRP. Non combustibility to BS 476: Part 4, BS EN ISO 1182 & Euro Class A1								
	Fire rated wall, up to wall height to 11m, Industrial lining	Fire rated spandrel, fire /smoke barrier or Hoarding	Fire rated wall upgrade		Fire rated ceiling	Fire rated duct & building services enclosure			
<b>Soben® MP - 1000/MultiPro®</b>	A fire rated calcium silicate board with fireproofing function for all kinds of common application. Non combustibility to BS 476: Part 4 & BS EN ISO 1182 & Euro Class A1								
	Fire rated wall, Perforated wall lining, Industrial lining	Fire rated spandrel, smoke barrier, hoarding & fire rated backing board to VE panel		Bent to form smooth curved wall or Ceiling, moisture resistant	Moisture resistant Ceiling	Moisture resistant building services enclosure		Moisture resistant underlayer to timber flooring	
<b>NuClad®</b>	A real versatile moisture tolerant calcium silicate architectural lining building board for wide variety of internal & semi-exposed applications. Non combustibility to BS 476: Part 4								
	Moisture & impact resistant wall, Perforated wall lining	Moisture & impact resistant wall lining			Moisture & impact resistant ceiling			Moisture & impact resistant under-layer to timber flooring	
<b>WeatherPro® - L</b>	A weatherproofing and impact resistant fibre cement reinforced calcium silicate board for common internal or semi exposed applications on building construction. Non combustibility to BS 476: Part 4, BS EN ISO 1182 & Euro Class A1								
	Water & impact resistant wall Prefabricated wall lining, Backing board to shop front	Water & impact resistant wall furring or hoarding	Wall covering on concrete / brick wall as a smooth & firm substrate for tiling or painting		Water & impact resistant ceiling	Water & impact resistant external building services enclosure	Vanity top at toilets and kitchens, water tightness	Water & impact resistant floor lining	
<b>WeatherPro® - Flex</b>	Its high flexibility enables the board to be bent to form smooth curved applications which offer versatility to architects and builders. It is an excellent product for the use on aesthetic interior decoration projects and furniture applications. Non combustibility to BS 476: Part 4								
				Bent to form smooth curved partition, water & impact resistant	Bent to form smooth curved ceiling, water & impact resistant				
<b>WeatherPro® - CP</b>	A high quality external grade façade panel board for high-rise buildings. It inborn with good strength, good resistance to heavy impact and severe weather conditions. Non combustibility to BS476:Part 4								
	Water & heavy duty impact resistant wall	Water and heavy duty impact resistant tunnel wall lining, left-in formwork	Sunscreens					Heavy duty impact & water resistant floor lining	Heavy duty & weatherproof board for over-cladding system
<b>WeatherPro® - S</b>	A high quality external grade board for heavy duty commercial and industrial use. It is designed for external and internal applications where high resistance to impact and weather resistance is required. Non combustibility to BS 476: Part 4								
	Water & heavy duty impact resistant wall	Left-in formwork						Heavy duty impact & water resistant floor lining	
<b>WeatherPlank Siding, WeatherTrim &amp; WeatherPlank Panel</b>	An exterior weatherproof and impact resistant fibre cement reinforced calcium silicate with wood-like embossed pattern siding and panel. Non combustibility to BS 476: Part 4, BS EN ISO 1182 & Euro Class A1								
	Decorative wall furring in wood-like finish	Impact resistant fence wall in wood-like or wood grain smooth finish		Curved walls or walls in wood-like or smooth finish					Impact resistant siding in wood-like or smooth finish
<b>WeatherPan®</b>	A prefabricated light weight solid wall panel with good fire resistant, waterproofing, sound insulation, impact resistant and heavy objects can be hung onto the wall panel. Non combustibility to BS 476: Part 4								
	Fire rated wall with self-supporting wall height up to 5.4m	Fire rated hoarding	Fire rated wall upgrade	Curved walls or walls in wood-like or smooth finish					Impact resistant siding in wood-like or smooth finish
<b>Artistic Ceiling</b>	A light weight moisture resistant fibre cement reinforced calcium silicate ceiling tile. The pre-finished tiles are available for Acoustic, Textured and Colour series. Non combustibility to BS 476: Part 4								
					Pre-finished & perforated acoustic ceiling				
<b>PVC Foam Board</b>	A light weight extruded PVC foam board contains no benzene and formaldehyde It is flame retarded, water repellent & bacterial resistant Flame retarded to BS476: Part 7 & UL94V-0								
	Decorative wall with silk printing		Bacterial resistant wall covering for clean room	Bent to form smooth curved wall			Base board for furniture in washroom		Water resistant external bill board