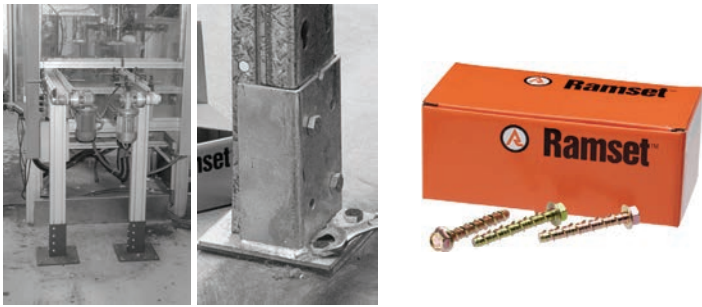


## AnkaScrew™ Screw-In Anchors

### The removable medium duty anchor

The AnkaScrew™ Screw-In Anchor is a medium duty, rotation setting thread forming anchor.

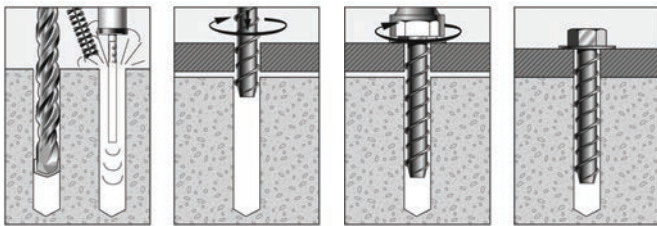


#### Specification

- The AnkaScrew™ Screw-In Anchor is an all steel, screw in, non-expansion, removable anchor for fast and simple anchoring into solid concrete, masonry and hollow brick and block

#### Substrates

- Concrete • Masonry • Hollow Brick • Hollow Block



#### Product Advantages

- Fast and easy to install
- Fast and easy to remove
- Does not expand and burst concrete which allows close to edge installation

#### Applications

- Pallet racking
- Temporary safety barriers
- Conveyors
- Pipe brackets
- Gate hinges into brickwork
- Temporary hand rails
- Bottom plates

#### Installation

- Drill hole to correct diameter and depth. Clean thoroughly with brush, pump, etc.
- Using a socket wrench, screw the AnkaScrew™ into the hole using slight pressure until the self tapping action starts.
- Tighten the AnkaScrew™. Ensure not to over tighten.
- For optimum performance, a torque wrench should be used.

### AnkaScrew™ Screw-In Anchors - Recommended Working Loads in 40N/mm<sup>2</sup> non-cracked Concrete

Anchor Size Hole Ø (mm)	Embedment Depth (mm)	Tightening Torque (Nm)	Shear Load (kN)*	Tensile Load (kN)*
6	45	25	3.8	3.8
8	60	40	7.0	6.1
10	75	60	11.5	9.1
12	90	80	13.9	13.3

\* Safety factor for all loads = 3

\* This table does not consider edge distance and anchor spacing effects. Please refer to Ramset Design Guide for more information.

### AnkaScrew™ Screw-In Anchors - Zinc Plated & Mechanically Galvanized



Part No. Zinc Plated	Part No. Mechanically Galvanized	Anchor Diameter (mm)	Anchor Length (mm)	Max. Fixture Thickness (mm)	Hole Ø (mm)	Hole Depth (mm)	Fixture Hole Ø (mm)	Order Qty
AS05030H	-	5	30	5	5	30	7	100
AS06050H	AS06050HGH	6	50	20	6	60	8	100
AS06075H	AS06075HGH	6	75	45	6	65	8	100
AS06100H	AS06100HGH	6	100	70	6	65	8	100
AS08060H	AS08060HGH	8	60	20	8	75	10	100
AS08075H	AS08075HGH	8	75	35	8	75	10	100
AS08100H	AS08100HGH	8	100	60	8	80	10	100
AS10060H	AS10060HGH	10	60	10	10	80	12	50
AS10075H	AS10075HGH	10	75	25	10	85	12	50
AS10100H	AS10100HGH	10	100	50	10	95	12	50
AS10150H	AS10150HGH	10	150	100	10	120	12	50
AS12075H	AS12075HGH	12	75	15	12	100	14	50
AS12100H	-	12	100	40	12	110	14	50
AS12150H	-	12	150	90	12	110	14	20