



MCM Rockwool is manufactured from natural rocks such as basalt, diabase, dolomite, etc. The rocks are melted and fibered in high temperature under furnace conditions, and later shaped to the desired rockwool board. The ability to partition air makes MCM Rockwool excellent as thermal insulator and sound absorber. Thanks to the fire resistance properties, it is widely used in building and construction industry when passive fire protection is required.

Application

Rockwool board is the most economical insulation material. It is commonly used for thermal, acoustic, fire resistance applications in domestic, commercial and civil projects.

- energy saving and conservation
- air duct and pipe works
- passive firestop backing
- ceiling applications
- condensation prevention
- drywall assemblies
- heat exchangers
- roofing and panel

Standard Specifications

Nominal Density	40 - 200 (kg/m ³)
Thickness	25, 30, 40, 50, 60, 70, 80, 90, 100 (mm)
Board Size	1200 x 600 (mm)
Blanket Size	3000 x 600 (mm) , 3000 x 910 (mm) 5000 x 600 (mm) , 5000 x 910 (mm)

* Other sizes and thickness are available upon request.

Packaging

Shrink wrapping type polythene packaging labeled with specifications
Number of rockwool board per pack depends on ordered density and thickness, it is recommended to check the final packing upon order.

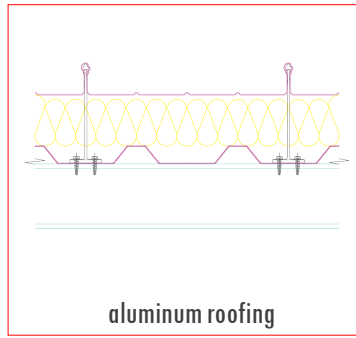
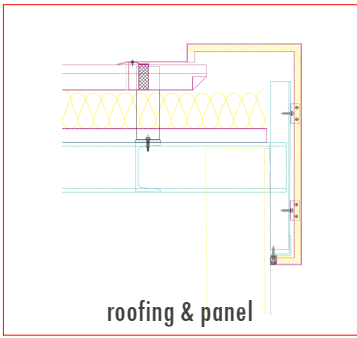
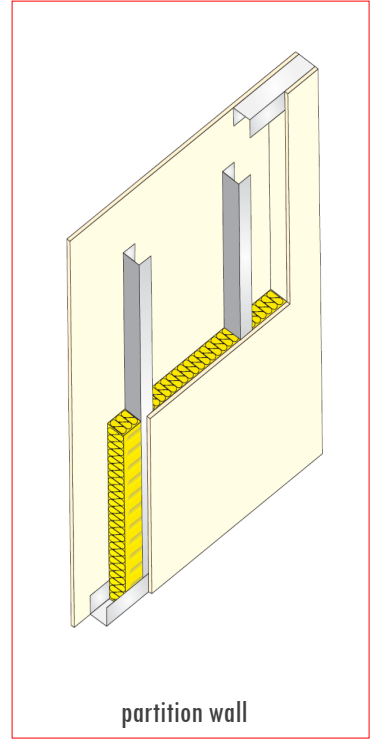
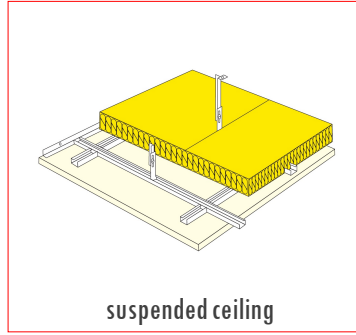
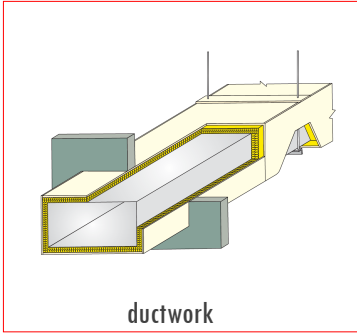
Physical Properties

Thermal Conductivity	≤ 0.035 W/mK at 70±5 °C
Applicable Temperature	-240 to 650 °C
Moistureproof	≥ 98 %
Fire Resistance	Non-combustible (tested to BS476 Part 4)

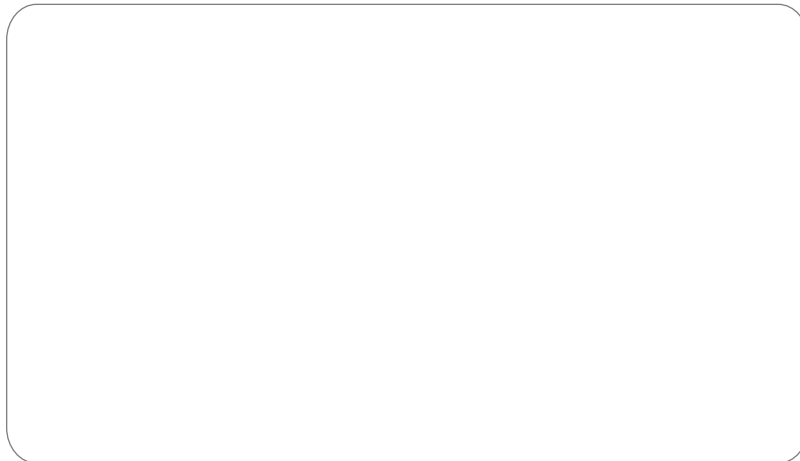
Sound Absorption

Tested to ASTM C423-08a and BS EN ISO 354:2003
Reports are available upon request

Illustration of Applications



Distributed by



MCM Construction Materials Supply Co. Ltd.

733 Tai Kei Leng Yuen Long N.T. Hong Kong | T (852) 2443 1222 | F (852) 2443 7000 | enquiry@mcmhk.com

As part of our policy of ongoing improvement, we reserve the right to modify, alter or change product specifications without giving notice. Product illustrations are representations only. All information contained in this document is provided for guidance only, and as MCM has no control over the installation methods of the products, or of the prevailing site conditions, no warranties expressed or implied are intended to be given as to the actual performance of the products mentioned or referred to, and no liability whatsoever will be accepted for any loss, damage or injury arising from the use of the information given of products mentioned or referred to herein.